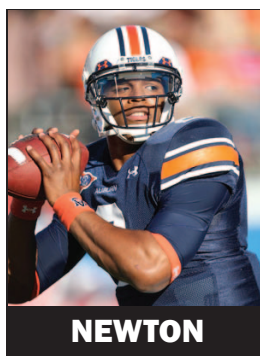


STATS' proprietary X-Info™ reveals the most detailed events that occur in a game for unrivaled prospect analysis. X-Info™ includes unique data points such as YAC, Burned Defenders & Broken Tackles. STATS is introducing X-Info™ statistics for the 2009 and 2010 Big Ten seasons and the 2010 SEC season at this year's NFL Combine.

Crimson Tide signal-caller Greg McElroy stacks up favorably with Heisman winner Cam Newton in several X-Info categories.



**MCELROY**



**NEWTON**



## Clutch Passing Percentage, 2010 SEC

(pct of 3rd/4th down passes for 1st down or TD)  
(Minimum 100 Total Attempts on Season)

|                                |             |                |
|--------------------------------|-------------|----------------|
| <b>Greg McElroy, Alabama</b>   | <b>47.2</b> | <b>(34/72)</b> |
| Stephen Garcia, South Carolina | 46.4        | (45/97)        |
| <b>Cam Newton, Auburn</b>      | <b>45.9</b> | <b>(34/74)</b> |
| Mike Hartline, Kentucky        | 45.2        | (56/124)       |
| Ryan Mallett, Arkansas         | 44.4        | (44/99)        |
| Aaron Murray, Georgia          | 43.9        | (43/98)        |
| John Brantley, Florida         | 42.5        | (48/113)       |
| Tyler Bray, Tennessee          | 41.5        | (27/65)        |
| Chris Relf, Mississippi State  | 41.1        | (30/73)        |
| Jeremiah Masoli, Mississippi   | 34.3        | (34/79)        |
| Matt Simms, Tennessee          | 31.0        | (22/71)        |
| Jordan Jefferson, LSU          | 30.1        | (22/73)        |

## Passing Under Pressure (Hurried or Knocked Down), 2010 SEC

(conference play only; knockdowns include sacks)

| Player, Team                   | Completion %         | TD       | INT      | Yds        | Rating       |
|--------------------------------|----------------------|----------|----------|------------|--------------|
| Matt Simms, Tennessee          | 64.7% (11/17)        | 3        | 1        | 208        | 214.0        |
| Jared Funk, Vanderbilt         | 33.3% (2/6)          | 0        | 0        | 64         | 122.9        |
| <b>Greg McElroy, Alabama</b>   | <b>42.5% (17/40)</b> | <b>1</b> | <b>1</b> | <b>301</b> | <b>109.0</b> |
| Ryan Mallett, Arkansas         | 40.0% (14/35)        | 1        | 2        | 278        | 104.7        |
| Jordan Jefferson, LSU          | 37.5% (12/32)        | 1        | 1        | 224        | 100.4        |
| <b>Cam Newton, Auburn</b>      | <b>42.9% (6/14)</b>  | <b>0</b> | <b>0</b> | <b>80</b>  | <b>90.9</b>  |
| Tyler Bray, Tennessee          | 32.1% (9/28)         | 0        | 3        | 257        | 87.8         |
| Mike Hartline, Kentucky        | 37.0% (17/46)        | 2        | 2        | 196        | 78.4         |
| John Brantley, Florida         | 31.8% (7/22)         | 1        | 0        | 75         | 75.5         |
| Chris Relf, Mississippi State  | 41.7% (10/24)        | 0        | 1        | 112        | 72.5         |
| Stephen Garcia, South Carolina | 33.3% (10/30)        | 1        | 2        | 110        | 61.8         |
| Aaron Murray, Georgia          | 29.0% (9/31)         | 0        | 2        | 163        | 60.3         |
| Jeremiah Masoli, Mississippi   | 30.6% (11/36)        | 0        | 1        | 140        | 57.7         |
| Larry Smith, Vanderbilt        | 20.0% (7/35)         | 0        | 1        | 58         | 28.2         |